

COFFEE

» HOT COFFEE

OUR CUSTOM ROAST COFFEE

"ELECTRIC BEAN WATER"

12oz \$3

20oz \$5

» COLD BREW \$5



NOT COFFEE

HOT TEA< ICED TEA<

12oz \$4 COLD BREWED

20oz \$6 IN HOUSE

20oz \$4

CIDER<

12oz \$4

20oz \$6

SEA SALT & CINNAMON



WHAT'S THE TEA?

CAFFEINATED

» EARL GREY DE LA CRÉME

EARL GREY TEA WITH AN ADDED HINT OF VANILLA AND BLUE MALLOW BLOSSOMS.

» MASALA CHAI

CEYLON BLACK TEA WITH CARDAMOM, GINGER AND CLOVE.

» ENGLISH BREAKFAST

BRISK, TANGY AND LEMONY WITH A MILD, BALANCED BODY AND RICH AROMA.

» DAYDREAM

BELIEVER BLACK

ORGANIC BLACK ASSAM TEA WITH ORGANIC ORANGE PEEL, VANILLA BEAN, ORGANIC ORANGE ESSENCE, AND ORGANIC BAVARIAN CREAM.

» LILI'S BLEND

CHINA BLACK TEA FLAVORED WITH PEACH, MANGO, APPLE, ORANGE AND GUAVA.

» CITRUS MINT SENCHA

ORGANIC LIGHT SENCHA GREEN W/ MINT LEAVES, LEMON PEEL, ORANGE PEEL, GRAPEFRUIT PEEL, AND LEMONGRASS.

» RASPBERRY

HIBISCUS BLACK

FULL BODY BROKEN ORANGE PEKOE BLACK TEA BLENDED WITH FREEZE DRIED RASPBERRIES, DRIED HIBISCUS, ORANGE PEEL AND NATURAL FLAVOR BLEND.

» CARAMEL

COCONUT PEAR

RICH ROASTED CHUNMEE GREEN TEA WITH ORGANIC SHAVED COCONUT, FREEZE DRIED PEARS, NATURAL FLAVOR BLEND

» CAMPFIRE S'MORES CHICORY (LIGHT CAF)

ORGANIC ROASTED CHICORY ROOT BLENDED WITH ORGANIC SMOKED LAPSANG SOUCHONG, CAROB, COCOA NIBS, VEGAN MARSHMALLOWS, AND NATURAL ESSENCES.

DECAF/ HERBAL

» EGYPTIAN CHAMOMILE

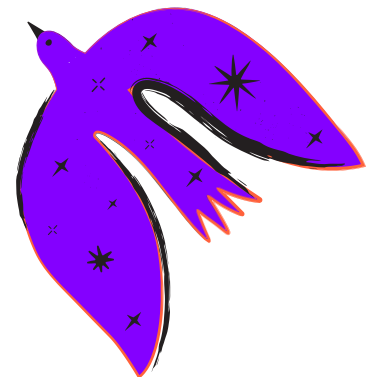
HERBAL TISANE WITH A SWEET, COMPLEX, DEEP YELLOW LIQUOR. FLORAL WITH A SMOOTH TASTE.

» PEPPERMINT

MINTY-COOL AND REFRESHING PEPPERMINT TEA WITH MENTHOL.

» MOONLIGHT EARL GREY

TRADITIONAL BERGAMONT INFUSED EARL GREY TEA WITH VANILLA BEAN, LAVENDER, AND NATURAL ESSENCE



DRINKS

NOT-A-LATTIE

HOT OR ICED, 20oz \$7
OUR COFFEE MIXED

WITH PREMIUM FLAVORS & PLANT MILK!

>SEA SALT & CINNAMON (& CARAMEL)

OUR SIGNATURE DRINK! COFFEE, OAT MILK, SALTED CARAMEL, AND CINNAMON BUN SYRUP.

>PUMPKIN PIE

OAT MILK, COFFEE, AND OUR HOUSEMADE PUMPKIN SAUCE!

>DIRTY COCOA

HALF COFFEE, HALF COCOA. WHAT ELSE DO YOU NEED?

>S'MORES

OAT MILK, COFFEE, COOKIE BUTTER, TOASTED MARSHMALLOW, & CHOCOLATE SAUCE.

>CRISPY APPLE

CREAMY SWEET APPLE SYRUP WITH COFFEE AND OAT MILK, TOPPED WITH WHIP.

TEA DRINKS

HOT OR ICED, 20oz \$

>GOTCHA MATCHA

MATCHA POWDER, AND OAT MILK.

ADD PUMPKIN SYRUP \$.50

>CREAMY MARSALA CHAI

AAHAA CHAI AND OAT MILK.

ADD PUMPKIN SYRUP \$.50

>LONDON HAZE

EARL GREY TEA, BREWED IN OAT MILK, WITH VANILLA.

>MUDDY CHAI

AAHAA CHAI, OAT MILK, AND COFFEE.



BYO

BUILD YOUR OWN DRINK!
START WITH CHAI, COFFEE, TEA, SODA, OR EVEN JUST MILK.

ADD ANY FLAVORS COMBINATION, MIX TEAS, COFFEE, SODAS, AND JUICES OR TELL US YOUR FAVORITE DRINK FROM ANOTHER COFFEE SHOP FOR US TO CREATE OUR VERSION FOR YOU!

ADD SYRUP \$.50EA

VANILLA, SALTED CARAMEL, CINNAMON BUN, AGAVE, CANE SYRUP, RASPBERRY, BLOOD ORANGE, MAPLE, ZERO SWEETENER, SF VANILLA.

POWDER/SAUCES

MATCHA, CHOCOLATE, PUMPKIN SPICE

DIRTY SODAS + JUICES



ICED, 20oz \$6

PREMIUM SODAS AND JUICES, PLANT MILKS, & SYRUPS.

CREATING A REFRESHING TWIST ON BEVERAGES!

MALL VIBES<

LIKE A ORANGE JULIUS!
ORANGE SODA, VANILLA, AND OAT MILK.

THE HITCHCOCK<

HALF ICE TEA, HALF APPLE CIDER, AND BLOOD ORANGE SYRUP.

SURELY TEMPLE<

GINGER SODA, GRENADINE, AND CHERRIES. A CLASSIC!

APPLE GINGER SPRITZ<

APPLE CIDER, GINGER SODA, AND MAPLE SYRUP.